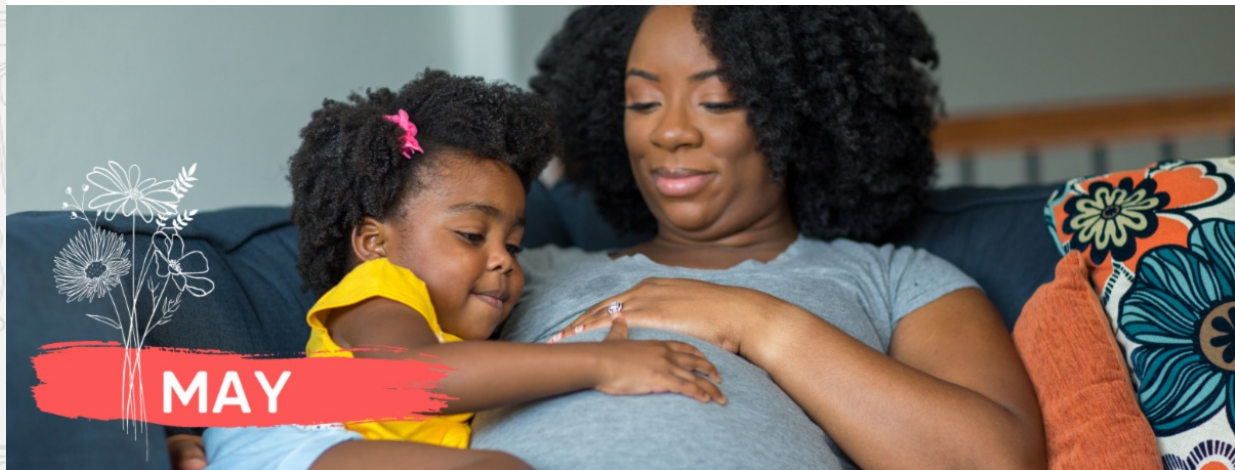


[View as Webpage](#)

ELC *focus*

May 2, 2025



SR Rule Updates, T2K Summer Bridge, MarcoPolo Access Cards, SR Match & ELC Provider Meetings
Providers, please read the **NEW** and updated information below pertaining to **VPK & SR program providers!** For general questions regarding this information, please contact our Provider Relations Department at (941) 757-2900 ext. 2300 for assistance.

Keeping Routines

Learn how keeping routines helps set the stage for a successful transition to summer fun and learning, easy ways to thank your child care provider, what to expect in kindergarten, tips for a head start for your child's mental health and more in the May issue of DEL's Parents' Pages!

[Learn More](#)



Parents' Pages

The Official Newsletter of the Division of Early Learning

MAY 2025
VOLUME 11
ISSUE 5



SCHOOL READINESS MATCH PROGRAM

Employee SR Match Program

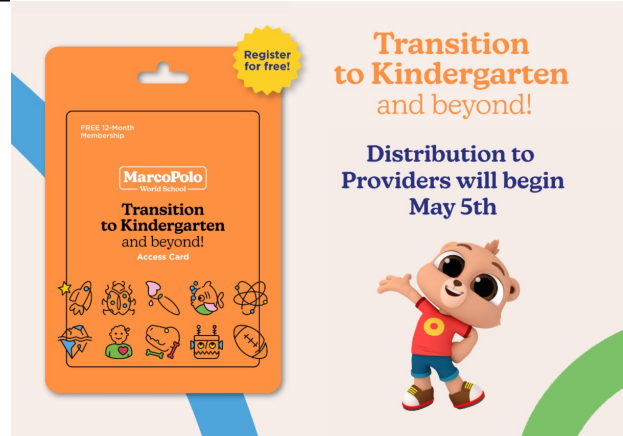
Providers, if you have employees whose children are in your care and would qualify for School Readiness, then this program may be a good fit for you! Click the link below to learn more!

[Learn More](#)

MarcoPolo T2K Access Cards

The ELC is excited to offer VPK families **free access to the MarcoPolo Transition to Kindergarten and Beyond app** through T2K MarcoPolo access cards, giving families valuable tools and engaging activities to help their children build skills for a confident start to kindergarten.

[Learn More](#)



TUESDAY TUNE-UP

Building Positive Classrooms

Join us on **May 6th or May 20th (Spanish) at 6:30pm via Zoom** to connect with our Child Development Team and special guest Discovery Source! Learn more about the Positive Behavior Prompt Kit, essential questions, prompts, and vocabulary that helps support routines, positive attention, and emotional expression in young learners.

[Learn More](#)

The ABC's of Safe Sleep

Join us on **Tuesday, May 27th** to learn how you can help prevent infant deaths from unsafe sleep environments. Review Manatee County data and key safety tips, and discuss real-life scenarios to help you support your co-workers and families.

[Register Here](#)



SLEEP BABY SAFELY

Virtual
CLASS[®]
PREK
GROUP
COACHING

ELC PROFESSIONAL DEVELOPMENT

A graphic for 'Virtual CLASS PREK GROUP COACHING'. It features a smiling young boy in a blue and white striped shirt. The text is overlaid on a blue and white background. At the bottom, there is a logo for 'ELC PROFESSIONAL DEVELOPMENT' with three stylized figures in pink, blue, and green.

CLASS Group Coaching

Join us on **June 3rd and June 5th** for CLASS Group Coaching for PreK teachers. Both sessions will be held **via Zoom** from **6:00pm-8:00pm**. **RSVP your attendance** to Melissa Cujas at mcujas@elc-manatee.org today to receive the meeting link.

NEW! ELC Provider Meetings
Starting on **June 10th**, the ELC will host monthly provider meetings. **Join us every 2nd Tuesday at 1:00pm** in person at the ELC or **virtually on Zoom** to connect, share ideas, and stay informed on updates that support your work with children and families.

[Learn More](#)



ELC
PROVIDER
MEETINGS

JOIN US IN PERSON AT THE ELC OR VIRTUALLY!



CLASS[®] **ASSESSMENTS**

Growing with CLASS: 3-Year-Olds
The ELC is now offering optional CLASS observations for three-year-old classrooms. This is not a formal evaluation, just a helpful resource to encourage more reflection on classroom interactions and explore ways to continue building strong, supportive learning environments. Click below to get started!

[Learn More](#)

SAIL Into Summer!

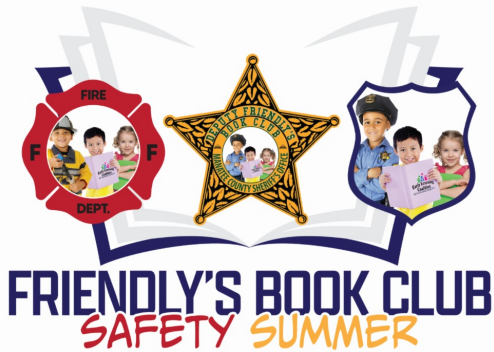
SAIL is a **NEW 11-week summer literacy program** designed to support early literacy development in **3-year-old through VPK classrooms**. ELC Coaches model lessons for teachers using the Nemours Reading BrightStart! curriculum to help strengthen kindergarten readiness skills.



Friendly's Book Club Summer Program!

From June to early August, child care sites receive three visits to learn more about water, fire, and general safety led by local first responders. Kids enjoy storytime, safety lessons, and free books! Interested? Click below to learn more and contact us to schedule your safety summer today!

[Learn More](#)



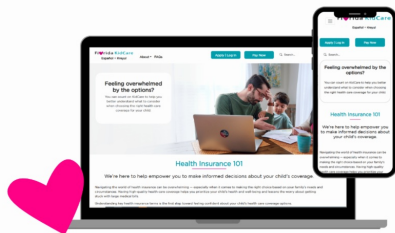
Pre-Apprenticeship Program Classes begin in August!

Do you enjoy working with kids? The Early Education Pre-Apprentice Program can help provide the necessary skills to become an early childhood educator. All costs are covered by the ELC, and job placement is available upon completion!

[Learn More](#)



Florida KidCare HEALTH AND DENTAL INSURANCE



DOWNLOAD & SHARE TODAY!

KidCare Healthcare 101

Navigating the world of health insurance can be overwhelming. To help empower families, Florida KidCare has launched a new landing page with clear explanations and Q&A's, making it easier to select coverage for their child that's unique to their needs and family circumstances.

[Learn More](#)





NEW! ELC MONTHLY PROVIDER MEETINGS

Dear Providers,

We're excited to share something new with you! **Starting June 10th**, the Early Learning Coalition of Manatee County will launch **monthly meetings** designed with YOU in mind - our valued Providers.

These meetings will take place on the **second Tuesday of each month at 1:00 pm** with an option to **attend in person at the ELC or virtually through Zoom**. These aren't just informational sessions - they're opportunities to connect, collaborate, and grow as a community of early learning professionals and, most importantly, elevate the quality of care for the children and families we serve.

What you can expect at the meetings:

- Share best practices
- Discuss ideas and challenges
- Explore solutions and where support is needed
- Stay updated on policies, licensing, and state regulations
- Strengthen connections with ELC staff and fellow providers

SCHOOL READINESS RULE UPDATES

School Readiness Providers,

The following rule updates were approved by the Board of Education on April 9, 2025. The rule updates will take effect at the start of next fiscal year (July 1, 2025). Major changes to the rules include:

6M-4.400: Required Parent Copayment

- Family copayment not to exceed 7% of the family's income.
- Removes family size as criteria for assessed copayment.
- Family will make only one copayment to one authorized provider.

6M-4.500: Child Attendance and Provider Reimbursement

- Reimbursement not paid prior to student's first day of attendance or after student's last day of attendance.
- Add provider reimbursement for one staff training day approved by the coalition
- Remove quality performance differential (QPI) of 4% for providers with program assessment composite scores of 4.50 to 4.99.

WHAT DOES THIS MEAN FOR PROVIDERS?

One significant change included in these rule updates for School Readiness Program providers is the **removal of the 4% Quality Performance Incentive (QPI) for providers with SR composite scores between 4.5 and 4.99**. Effective July 1, 2025, providers with a SR composite score between 4.50 and 4.99 will no longer receive a 4% QPI differential.

Providers can now have up to thirteen days paid for School Readiness, one of which must include a professional day. If you would like to add a closure for a paid professional day **please add the closure to the calendar tab in your 2025-2026 profile by Friday, May 2nd and submit your profile for review and activation.** We will begin initiating contracts next week.

SCHOOL READINESS MATCH PROGRAM

Providers,

If you have **employees whose children are in your care and would qualify for School Readiness** then this program may be a good fit for you! Through the School Readiness Match Program (SRMT), the children of these employees can be enrolled in care immediately and the **SRMT will pay 50% of the applicable care rate! You can offer the other 50% as an employee benefit.**

For general questions, or if you are interested in participating in the SRMT for the 2025-2026 fiscal year, please contact Robin Carbone at (941) 212-4902 or email rcarbone@elc-manatee.org by May 19th.

VPK FAST STAR EARLY LITERACY PM3 ASSESSMENTS

FAST PM3 assessments are now current. Please ensure you assess all your VPK children within the last 30 days of your VPK program. **PM3 assessments must only take place once the window has opened. If you assess early or late, the program will be NON-compliant.** Please review your VPK application to confirm the last 30 days of your program and assess accordingly.

Please contact the Provider Relations department at (941) 757-2900 ext. 2300 for general questions regarding the VPK PM3 Assessments.

MARCOPOLO TRANSITION TO KINDERGARTEN ACCESS CARDS

Exciting Opportunity for VPK Families: Free Access to the MarcoPolo Kindergarten Readiness App

The Early Learning Coalition of Manatee County is excited to offer VPK families free access to the award-winning MarcoPolo: Transition to Kindergarten and Beyond app. Access is provided through T2K MarcoPolo access cards, giving families valuable tools and engaging activities to help their children build skills for a confident start to kindergarten. **Providers who opted in through the recent survey will receive access cards** according to the timeline below:

Important Timeline:

- **Cards Distributed to Centers: May 5th - 16th**
- **Cards Sent Home to Families: May 19th - 30th**
- **Family Use Begins: June 2nd**

Thank you for the incredible work you do to support young learners. We are grateful for your continued partnership in helping children and families make a smooth and successful transition to kindergarten.

If you have any questions, please contact rspivey@elc-manatee.org.

VPK TRANSITION TO KINDERGARTEN & SUMMER BRIDGE

Providers, please review the following important requirement.

- Pursuant to **Rule 6A-6.0530, F.A.C.**, a VPK student who scores below the 10th percentile on PM3 or who has a non-participation status of "assessment inappropriate," "failed practice," or "non-English speaker" on PM3 is eligible to participate in the **Summer Bridge Program** the summer before entering kindergarten. It's important to note that only PM3 results are used to determine whether VPK students are eligible for the Summer Bridge program.
- VPK providers **must inform families of students' eligibility for Summer Bridge within seven days of students' PM3 assessment**. There are two forms used to communicate eligibility to families, both attached with details below. Renaissance's **Star Early Literacy Parent Report** and the **Statement of Eligibility Form**.

SAMPLE STAR LITERACY PARENT REPORT

- On the sample Star Early Literacy Parent Report, we want to draw your attention to the **yellow box**, which **contains important information** for children who are scoring below the 40th percentile or the 10th percentile. **Please highlight this information for families.**

Parent Report for Sample Child

School	Teacher	Class	Grade	Test Date
Sample School	Mrs. Teacher	Af24	Pre-K	Dec 11, 2024 8:39 AM

Dear Parent or Guardian of Sample Child

Sample has taken a Star Early Literacy assessment on the computer. Star Early Literacy measures your child's proficiency in up to nine areas that are important in reading development. As with any assessment, many factors can affect your child's scores. It is important to understand that these scores provide only one picture of how your child is doing in school.

561
Scaled Score

The Scaled Score is your child's overall score, calculated based on both the difficulty of the questions and the number of correct responses. Scaled Scores in Star Early Literacy on the Unified scale range from 200 to 1100 and span the grades Pre-K through 3.

9
Percentile Rank (PR)

Sample's skills are higher than 9% of students nationally in the same grade. This score is below average. The PR Range indicates that, if Sample had taken the Star Early Literacy test many times, most of their scores would likely have been between 3-20.

<PK
Grade Equivalent (GE)

GE scores range from PK.0 to >3.9. Based on national norms, Sample early literacy skills are below those of a typical pre-kindergartener. The score does not necessarily indicate the ability to read independently at this grade level.

I will be using these Star Early Literacy test scores to help Sample further develop their early literacy skills for early literacy practice at school. If you have any questions about your child's scores or these recommendations, please contact me at your convenience.

- If your student scored **below the 10th percentile**, they may be eligible for a \$1,200 **New Worlds Scholarship Account** to be used for instructional materials, tutoring, or summer and after school educational programs. Visit <https://www.stepupforstudents.org/scholarships/new-worlds-scholarship-accounts/> for more information.
- **VPK Only:** If your student scored **below the 10th percentile**, they may be eligible to participate in a free **Summer Bridge Program** offered by the school district. Contact your local school district for more information.
- If your student scored **below the 40th percentile**, they are eligible to receive free books on a monthly basis through the **New Worlds Reading Initiative**. Visit <https://newworldsreading.com> for more information.

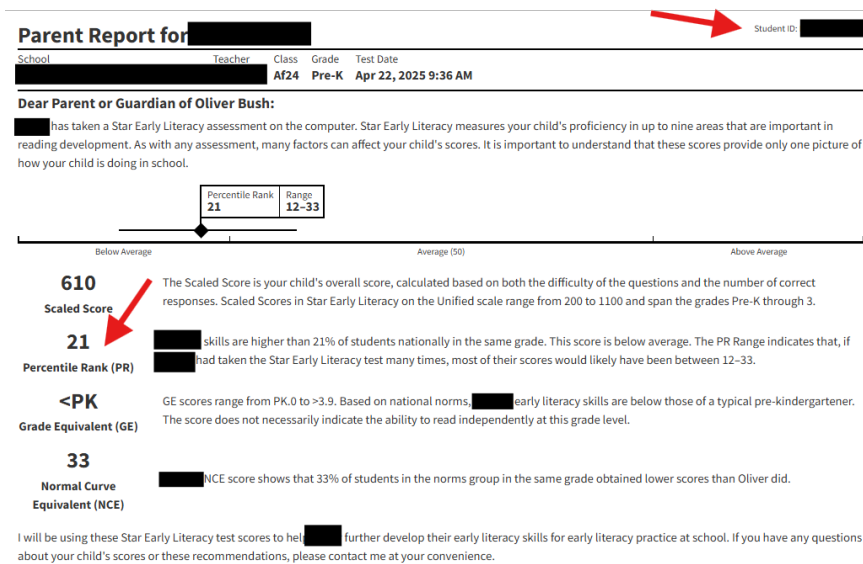
- **If a child's score is below the 10th percentile**, they qualify for the **Summer Bridge Program** hosted by the school district. This program is critical for children as they transition to kindergarten. It provides the opportunity for children to be on a school campus and participate in a program specifically designed to support kindergarten readiness skills. Families can register with the School District of Manatee County at <http://www.manateeschools.net/registration>.
- **For any student meeting this criterion on PM2**, the PM2 Star Early Literacy Parent Report will have had a message that states, "Your child may be eligible for the Summer Bridge program," and the PM3 Star Early Literacy Parent Report will have a message that states, "Your child is eligible for the Summer Bridge program." **This report cannot be generated for students with a non-participation status which is why there is the Statement of Eligibility form.**

TIPS FOR COMPLETING THE STATEMENT OF ELIGIBILITY FORM

- **Box 3: Child FLEID:** You can find this number by pulling up the Star Parent Report and clicking show FLEID. See photo. Then running the report, each students ID will be in the upper corner of their report.

The screenshot shows the 'Star Parent Report' interface. At the top, there are filters for 'Subject' (Reading) and 'Assessment Types' (Star Early Literacy). Below that, 'School' and 'Students' (Af24) are selected. A 'Demographics' section has a 'Choose Demographics...' button. 'Reporting Period' is set to 'PM3', 'Sort Students By' is 'Classes/Grc', and 'Language' is 'English'. The 'Scale' is set to 'Star Unified Scale'. At the bottom, there are four checkboxes: 'Show Grade Equivalent', 'Show FLEID' (highlighted with a red arrow), 'Show Normal Curve Equivalent', and 'Show Signature Line'.

- **Box 4: Assessment Results:** Please write either Non-participation status and list "assessment inappropriate," "failed practice," or "non-English speaker" or indicate the students Percentile Rank (PR).



TO ENSURE A SUCCESSFUL TRANSITION TO KINDERGARTEN

- Please provide families with the **Star State Benchmarks Mastery - Individual Report** to share with their child's kindergarten teacher at the beginning of the school year or with their Summer Bridge Teacher. The goal is to use the data collected from the Star Early Literacy assessments to support continued learning progress. View the [How to Pull the State Benchmarks Mastery Guide](#) and [Sample Student Report](#) for assistance.
- Please encourage families to register their children for kindergarten now. You can use the [Kindergarten Readiness flyer](#) to help spread the word.

If you need assistance or have any questions, please contact our Provider Relations Team at (941) 757-2913 ext. 2300 for support.